

Building Restoration and Redevelopment



There are two small original buildings in the park:

A Bowls Pavilion, and a Gardeners Hut



Both structures, although knocked about and badly extended in the past, are basically sound. Their restoration and re-use form an important part of this bid, because they act as a symbolic focus for the community's aspirations in relation to heritage conservation, and for providing essential facilities which to enable the development of a wider range of activities in the park than was possible previously.

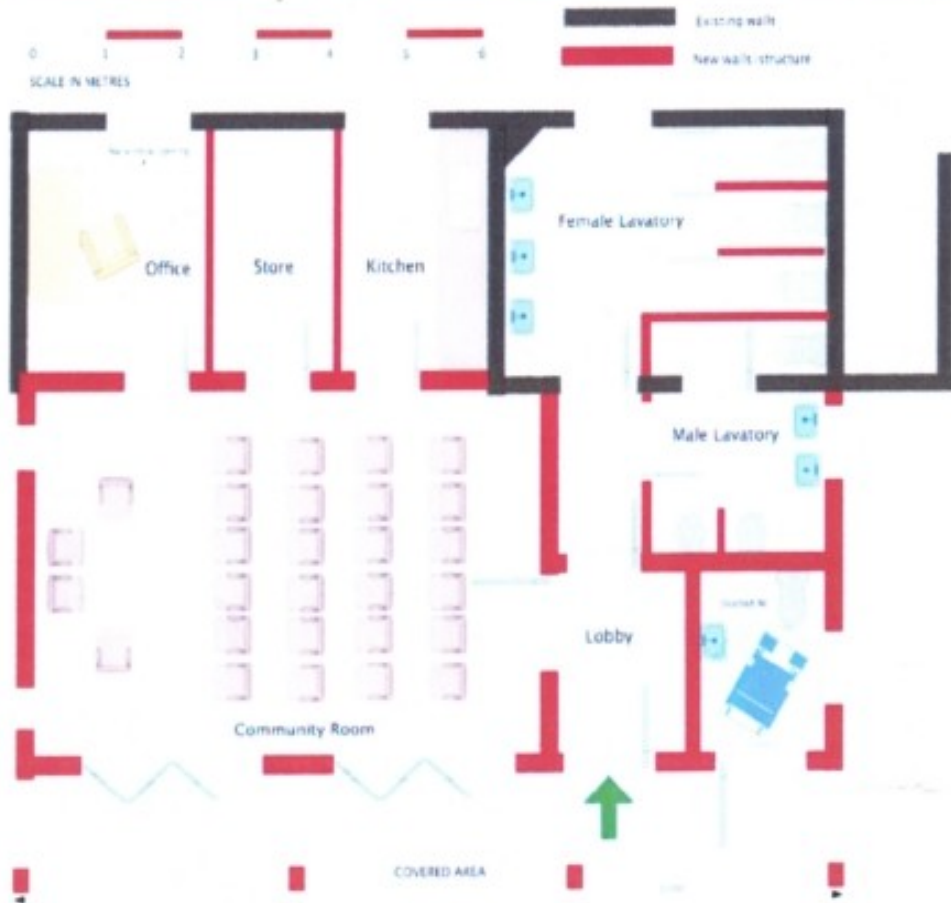
The loss of the Bowls Pavilion would not only significantly damage the practical use of the green, but the whole Edwardian atmosphere of this part of the park. The Gardener's Hut is perhaps less important as a focal point, but offers an important opportunity for giving park users and the wider community a place to meet in the park and have a base from which to work.

Both buildings, then, play a vital role in the future development and management of the park.

Conservation Architect Peter Skinner was commissioned to survey the condition of the buildings and prepare proposals for their restoration.

The brief asked for a small meeting room, toilets, simple refreshment facilities, shelter, and accommodation for the resident gardener. The design and finishes were to be modest but capable of further enhancement through voluntary / community action, and the style should respect and preserve as much of the character of the buildings as possible. His report and proposals are attached.

DUNWOOD PARK SCHEME PROPOSALS



The Gardener's building is best suited to provide a location for new community facilities. Its current size could be doubled to provide a meeting room with views of the the Park to the east. New lavatory facilities can be formed in both the old and the new parts as the plan (above) shows.



PETER G SKINNER RIBA CHARTERED ARCHITECT 12 BOLLINGTON ROAD BOLLINGTON CHESHIRE SK10 5EF